

M



Sylvie Johnson

Haven, 2025

Cotton, Silk, Wool

Jacquard-Woven

Max width without seam 11' 2"

Numbered edition on label version

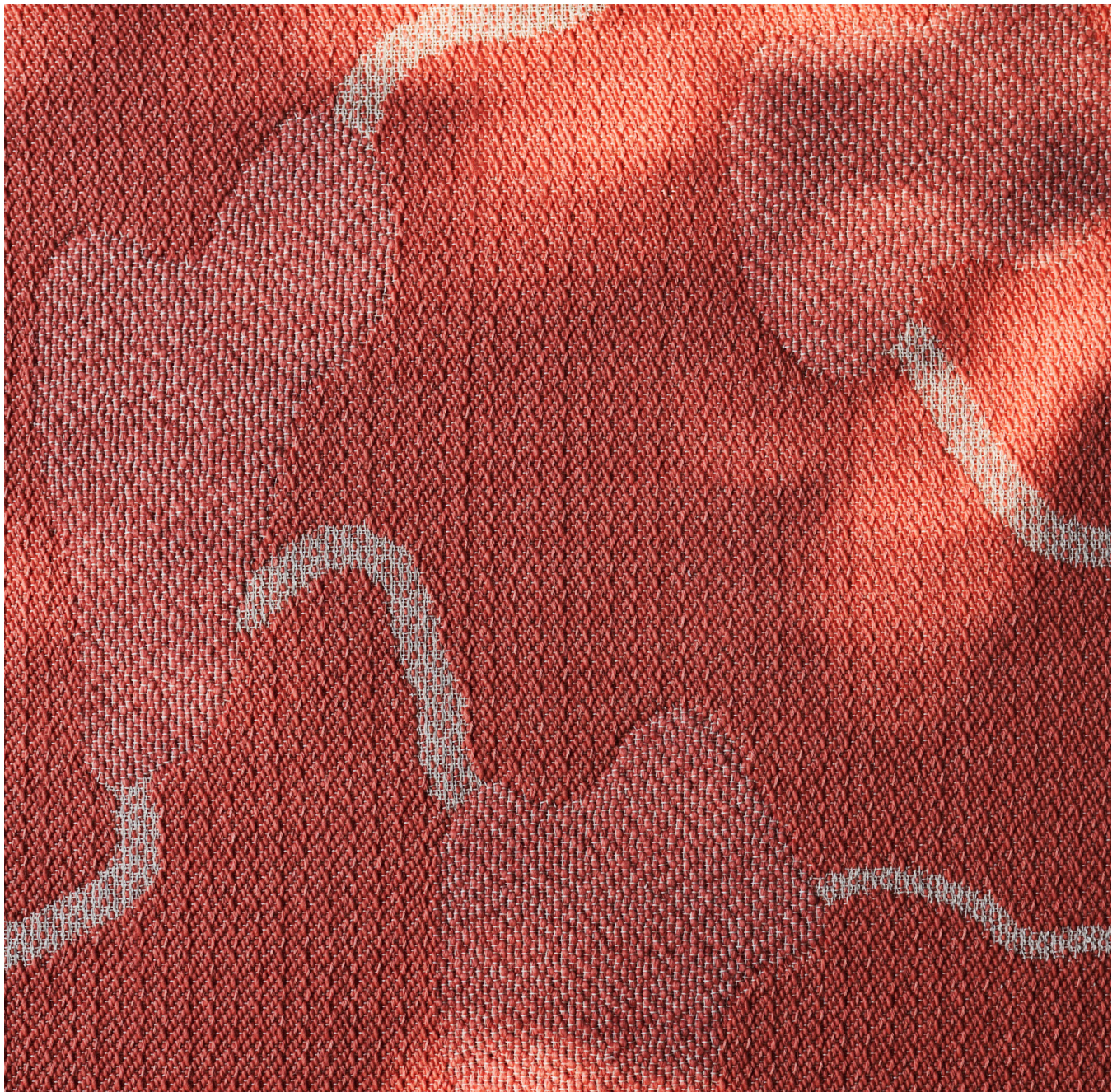
Atelier Series | 30 Editions + 1 Artist's Proof

Featured as 72 x 108 in (183 x 274 cm) in Coral colorway

meridastudio.com

1 800 345 2200

M



Sylvie Johnson

Haven, 2025

Cotton, Silk, Wool

Jacquard-Woven

Max width without seam 11' 2"

Numbered edition on label version

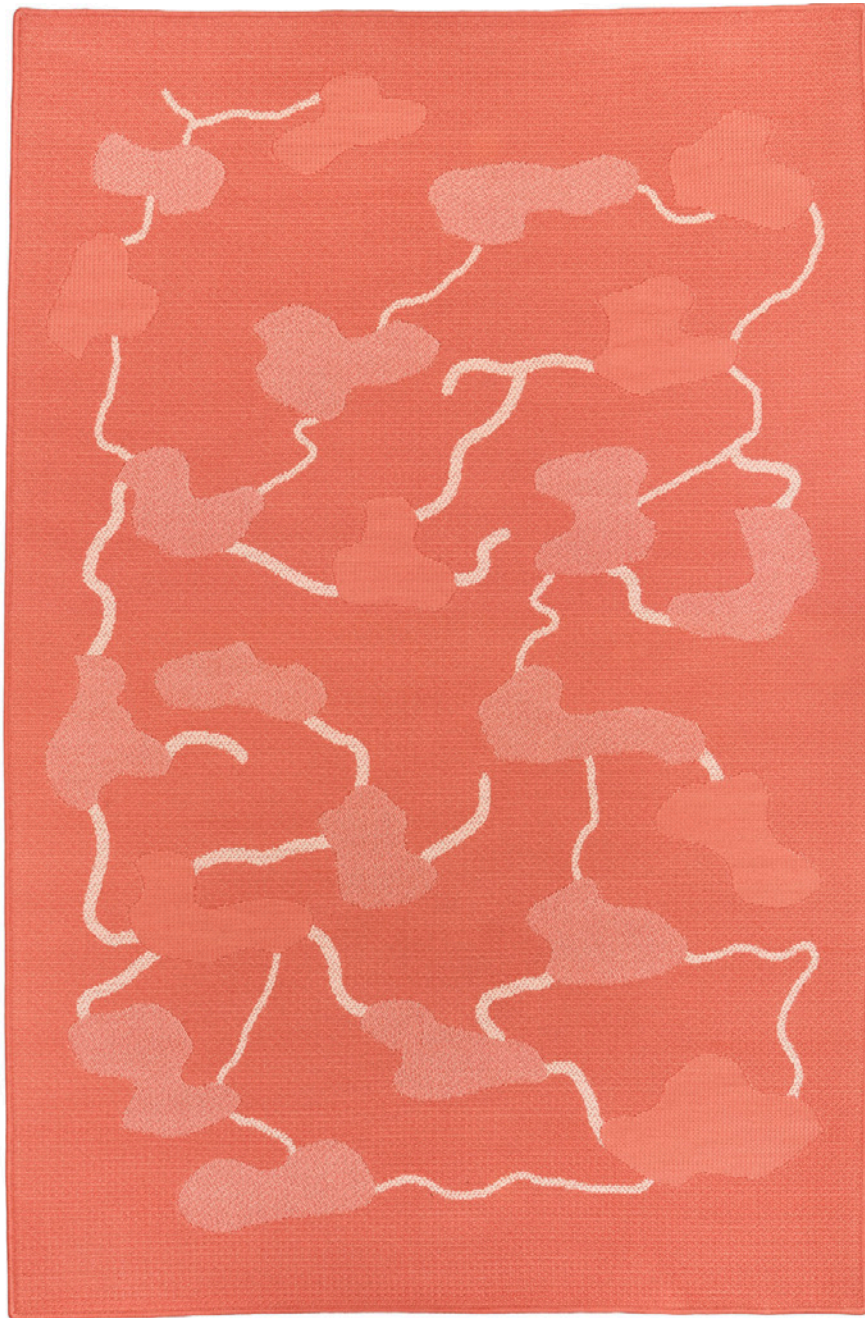
Atelier Series | 30 Editions + 1 Artist's Proof

Featured as 72 x 108 in (183 x 274 cm) in Coral colorway

meridastudio.com

1 800 345 2200

M



Sylvie Johnson

Haven, 2025

Cotton, Silk, Wool

Jacquard-Woven

Max width without seam 11' 2"

Numbered edition on label version

Atelier Series | 30 Editions + 1 Artist's Proof

Featured as 72 x 108 in (183 x 274 cm) in Coral colorway

meridastudio.com

1 800 345 2200

M



Sylvie Johnson

Artist Biography

Sylvie Johnson is a French-Senegalese artist whose work explores the spiritual and sculptural potential of textile. Known for her poetic handwoven works and for creating the works of her Atelier Period through her artist residency at Merida Studio, Johnson bridges art, craft, and philosophy—treating each piece as a meditation on time, nature, and the invisible structures that shape beauty.

meridastudio.com

1 800 345 2200



Sylvie Johnson

Artist Biography

Sylvie Johnson is a French-Senegalese artist whose work explores the expressive potential of textile as a medium for reflection, architecture, and emotional resonance. Trained in both economics and art, Johnson brings a uniquely intellectual and philosophical approach to materials, time, and structure. Her personal studio practice in Paris is focused on handwoven textiles—original works of linen, mohair, and wool that explore form, shadow, and silence through weaving. Deeply influenced by ancient civilizations, modernist architecture, and the natural world, Johnson considers herself a “militant of beauty,” working in quiet opposition to speed and superficiality.

Central to her work is the Japanese concept of *ma*—the interval, the pause, the breath that gives shape to perception. In her process, time is not a constraint but a medium: each piece emerges from months or even years of study, drawing, material research, and repeated practice.

Since 2017, Johnson has taken part in the artist residency at Merida Studio, an American workshop known for its devotion to craft and natural materials. At Merida Studio, Johnson creates the *Atelier Series*—a body of collectible rugs and wall hangings that expand on her individual practice. Within this context, Johnson works closely with Merida Studio’s craftsmen to translate her artistic vision into architectural textiles that blur the boundaries between art, design, and material culture. The artist’s proofs, created under her direct supervision, serve as foundational expressions of these ideas—original pieces where her touch, intention, and experimentation are most palpable.

Johnson’s work is defined by a rigorous aesthetic language and a reverence for the invisible forces that shape perception: light, memory, silence, emotion. Across her private studio and her work with Merida Studio, she creates works that engage not only the eye and the hand, but the soul. Her practice affirms that textile is not merely decorative or functional—it is philosophical, sculptural, and enduring.



Merida Studio

About

Based in Fall River, Massachusetts, Merida Studio is an artist workshop, gallery, and residency specializing in textile art. Led by owner and director Catherine Connolly and founded on the principles of savoir-faire, the studio collaborates with contemporary artists to create unique site-specific works. Merida Studio strives to extend the chain of textile art and its rich history by researching natural fibers and engaging the art and design community.

meridastudio.com

1 800 345 2200



Merida Studio

About

Merida Studio is a contemporary textile workshop based in Fall River, Massachusetts, devoted to the belief that weaving is both an art and a philosophy. Founded in 1978 and reimagined under the leadership of owner and director Catherine Connolly, the studio has undergone a profound transformation—from a respected rug manufacturer into a multidisciplinary workshop that bridges design, craft, and art.

Guided by Connolly's vision, Merida Studio's mission is to reconnect people with the beauty of making. The studio's work is rooted in natural materials and executed with a devotion to craft that honors both heritage and innovation. Every textile is designed, woven, and finished in-house by a team of artisans who see weaving not as production but as a practice—an exploration of rhythm, movement, and light.

Merida's creative identity is built on two intertwined paths: collaboration and experimentation. Through its artist residency program, the studio partners with textile artists from around the world, providing a space for exchange, mastery, and discovery. These collaborations deepen the studio's understanding of material and expand the language of weaving as a fine art. Parallel to this, Merida's Studio Series represents the work of its in-house team—a collective of weavers, designers, and craftspeople whose ideas, studies, and technical innovations shape a continually evolving body of work. This internal practice fuels the studio's ability to create fully custom pieces for designers and collectors, merging artistic intention with technical precision.

What defines Merida is a reverence for process and a belief that beauty requires time. The studio's philosophy is rooted in a countercultural approach to making—slowing down, working by hand, and letting material guide form. This philosophy has earned Merida recognition as one of the only American textile studios creating woven works of true artistic and cultural value.

Today, under Catherine Connolly's direction, Merida continues to evolve as an artist studio for textiles, dedicated to the pursuit of excellence and the conviction that art is not separate from life, but woven into it.